



jordanfishwick

Brackenwood Mews

£695 PCM



Brackenwood Mews, Cheshire, SK9 2QG

£695 PCM

PART FURNISHED AVAILABLE NOW

Well presented studio apartment on the ever popular Summerfields development built by Jones Homes. Decorated to a good standard throughout, the property has been considerably upgraded and comprises: communal entrance hall, individual letter boxes and bell pushes, L shaped lounge/bedroom area, separate kitchen with appliances, separate enlarged bathroom with jacuzzi bath.

Off road parking and communal gardens.

Contact Wilmslow 01625 536300 £695.00pcm

COUNCIL TAX A

EPC C

LOCATION

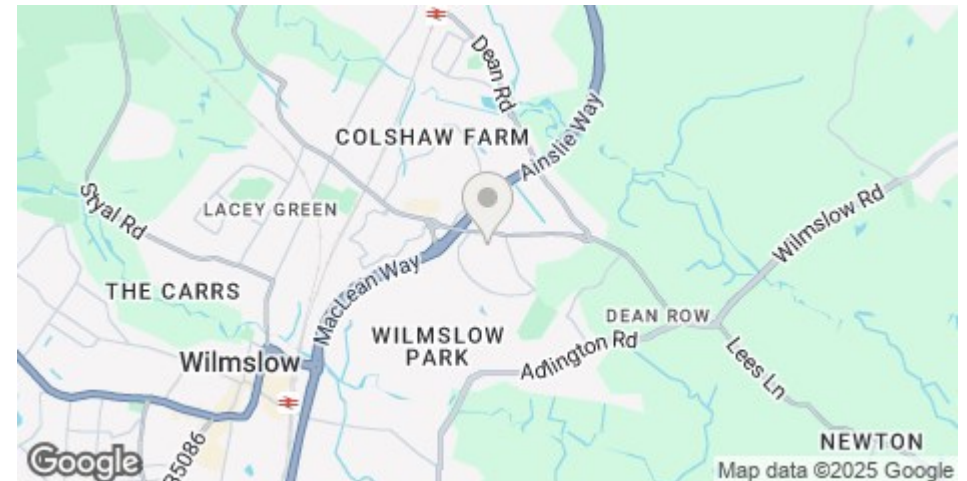
Brackenwood Mews always proves to be a popular location with a great community feel and only a short walk to the Summerfields shopping centre.

Jordan Fishwick Estate and Letting Agents Wilmslow office is located in a prime position central to the bustling and stylish town centre. With our impressive frontage it's impossible to miss our attractive office. Managed by Guy Grainger, Partner, who has been an Estate Agent since 1980, and has a wealth of local knowledge and experience. With busy sales and lettings departments all under the same roof along with our independent mortgage advisor on hand the Wilmslow branch has everything you need to help with your sales or lettings transactions. Knowledgeable and friendly staff also compliment the range of services we offer and we are known throughout the Wilmslow area for our proactive approach in helping people find their dream home.

DIRECTIONS

From our Wilmslow office proceed north on Alderley road until you reach the traffic lights, take a right onto Manchester Road when you reach the roundabout take the third exit onto Bollin Valley Link and at the next roundabout take the first exit onto the A34, proceed until the next round about and take the first exit onto Dean row at the next roundabout take the fourth exit onto Dean Row Road, proceed to the next set of traffic lights where you will be taking the right turn onto Pinewood Road then the first left onto Larchwood Drive, in 200 yards turn left then in 80 yards take a left again, Brackenwood Mews will be on your right hand side.

POSTCODE - SK9 2QG



- STUDIO APARTMENT
- POPULAR LOCATION
- MODERN KITCHEN AND BATHROOM
- OFF ROAD PARKING
- COMMUNAL GARDENS
- COUNCIL TAX C
- EPC C

Postcode - SK9 2QG

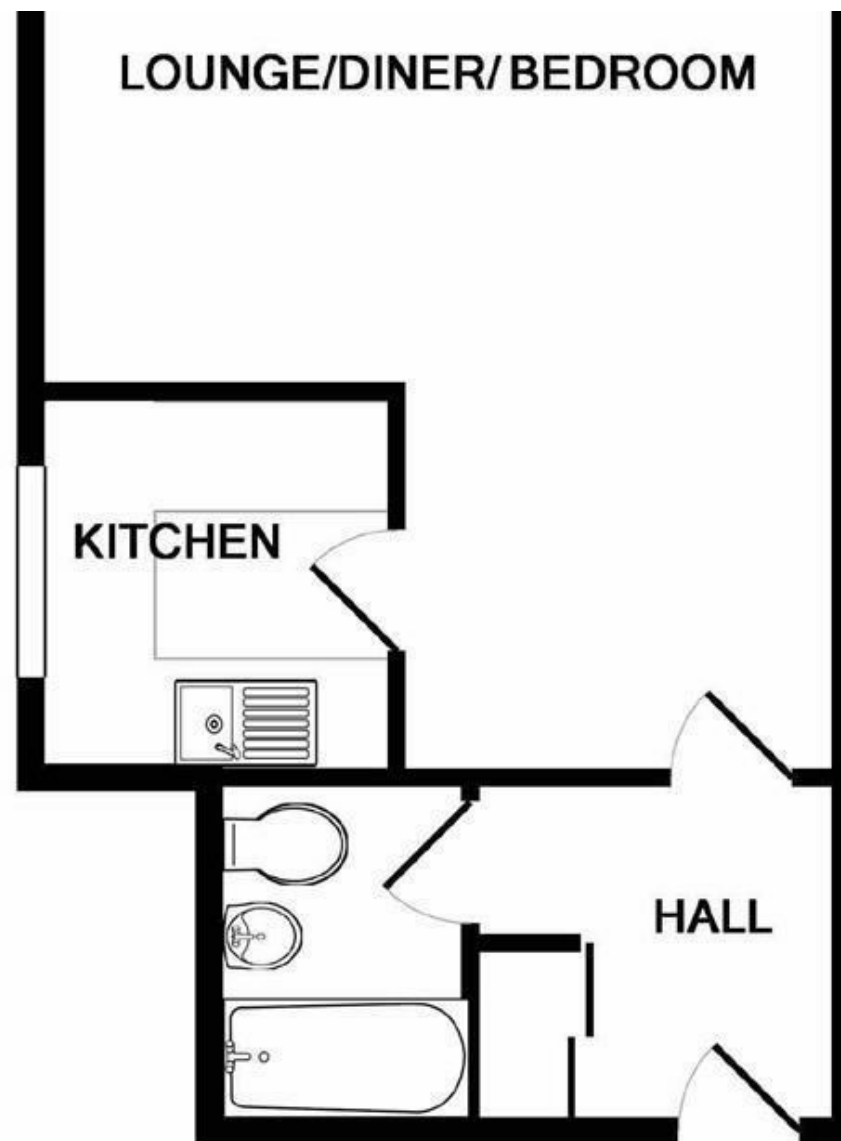
EPC Rating - C

Floor Area - sq ft

Local Authority - Cheshire East Council

Council Tax - A





These particulars are believed to be accurate but they are not guaranteed and do not form a contract. Neither Jordan Fishwick nor the vendor or lessor accept any responsibility in respect of these particulars, which are not intended to be statements or representations of fact and any intending purchaser or lessee must satisfy himself by inspection or otherwise as to the correctness of each of the statements contained in these particulars. Any floorplans on this brochure are for illustrative purposes only and are not necessarily to scale.

Offices at: Offices at Chorlton, Didsbury, Disley, Hale, Glossop, Macclesfield, Manchester Deansgate, Manchester Whitworth Street, New Mills, Sale, Wilmslow and Withington

01619291994